

# **Regulation Revisions**

## **SUBDIVISION REGULATIONS CITY OF CHICOPEE MASSACHUSETTS**

### *Section 1 - Subdivisions*

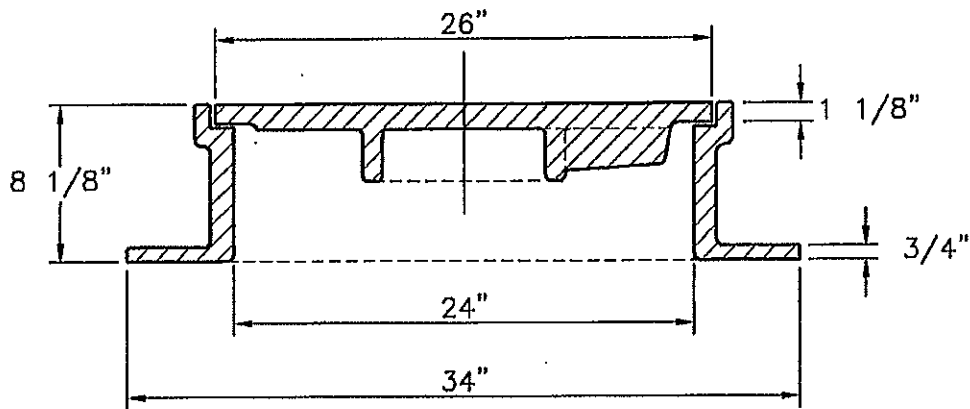
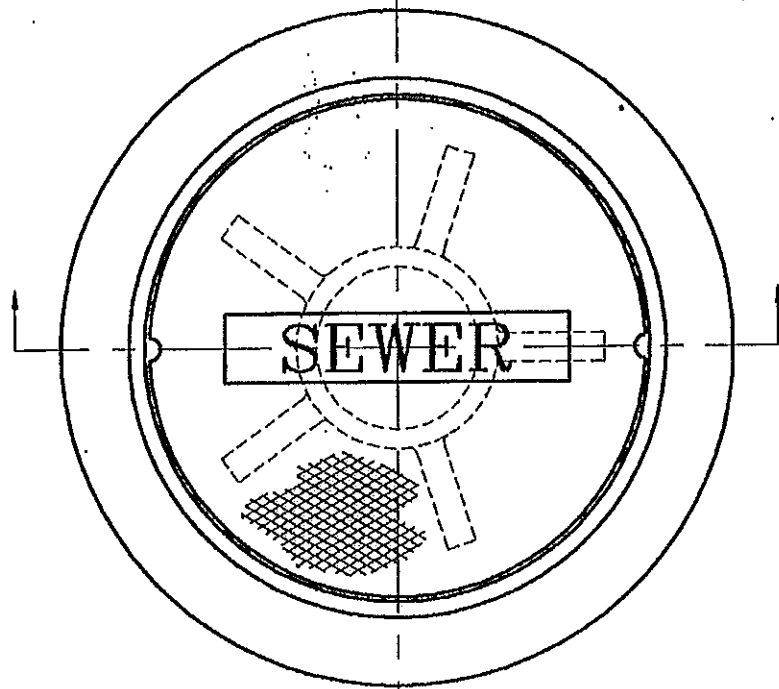
The following are Revisions to the City of Chicopee Subdivision Regulations since the adoption date of April 7, 2005.

<b>Revision #</b>	<b>Section Revised</b>	<b>Date of Revision</b>
08-1	1-31C, 1-31E	January 17, 2008

# **Appendix**

## **SUBDIVISION REGULATIONS CITY OF CHICOPEE MASSACHUSETTS**

*Section 1 - Subdivisions*



**NOTES:**

FRAME AND COVER SHALL BE LeBARON FOUNDRY CATALOG NO. LT 106 WITH COMBINED WEIGHT OF 475 LBS. OR EQUAL.

DRAIN MANHOLE COVER SHALL HAVE "DRAIN" CAST INTO LID.

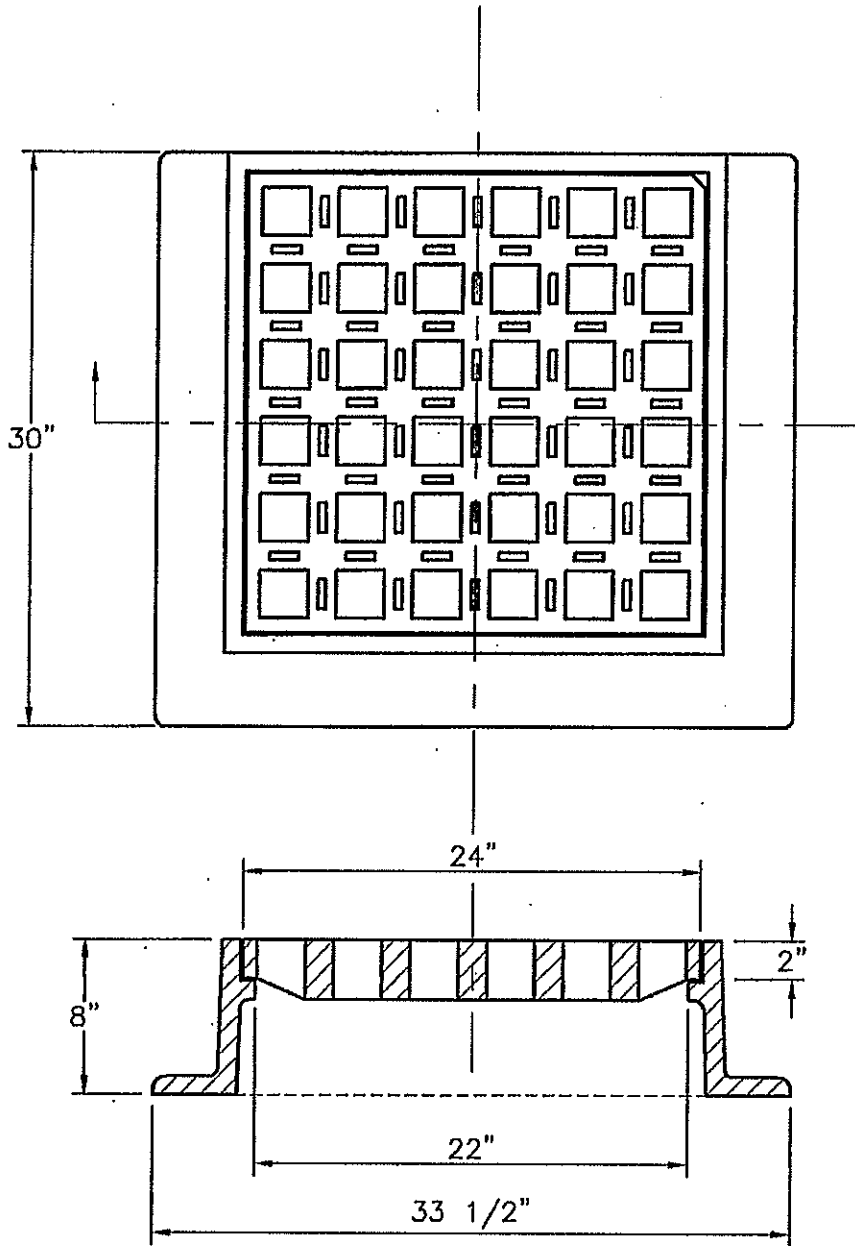
**MASSACHUSETTS  
STANDARD  
26 IN. DIA.  
MANHOLE  
FRAME & COVER**

**CITY OF CHICOPEE ENGINEERING DEPARTMENT  
115 BASKIN DRIVE  
CHICOPEE, MASSACHUSETTS 01020  
(413) 594-3416**

**DRAWN BY: CJC  
CHECKED BY: FWV  
APPROVED BY: SJF**

**DATE: Feb., 2000  
SCALE: N.T.S.**

**DRAWING NUMBER**



**NOTE:**

FRAME AND GRATE SHALL BE LeBARON FOUNDRY CATALOG NO. LF248-2 WITH COMBINED WEIGHT OF 480 LBS. OR EQUAL.

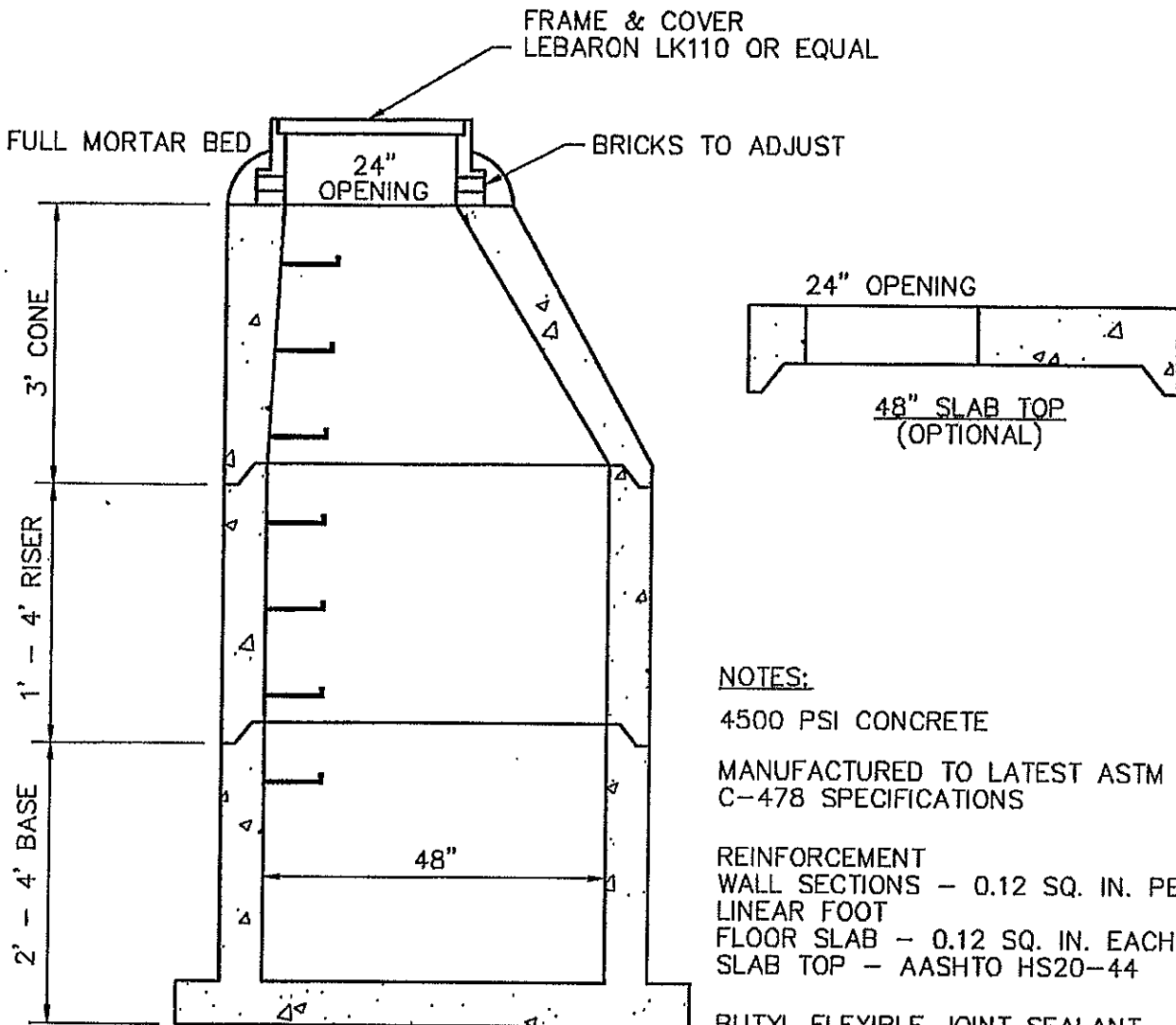
**MASSACHUSETTS  
STANDARD  
CATCH BASIN  
FRAME & GRATE**

**CITY OF CHICOPEE ENGINEERING DEPARTMENT  
115 BASKIN DRIVE  
CHICOPEE, MASSACHUSETTS 01020  
(413) 594-3416**

**DRAWN BY: CJC  
CHECKED BY: FWV  
APPROVED BY: SJF**

**DATE: Feb., 2000  
SCALE: N.T.S.**

**DRAWING NUMBER**



**NOTES:**

4500 PSI CONCRETE

MANUFACTURED TO LATEST ASTM C-478 SPECIFICATIONS

**REINFORCEMENT**

WALL SECTIONS - 0.12 SQ. IN. PER LINEAR FOOT

FLOOR SLAB - 0.12 SQ. IN. EACH WAY

SLAB TOP - AASHTO HS20-44

BUTYL FLEXIBLE JOINT SEALANT CONFORMS TO LATEST ASTM C-990 SPECIFICATIONS

MANHOLE STEPS - STEEL REINFORCED COPOLYMER POLYPROPYLENE PLASTIC

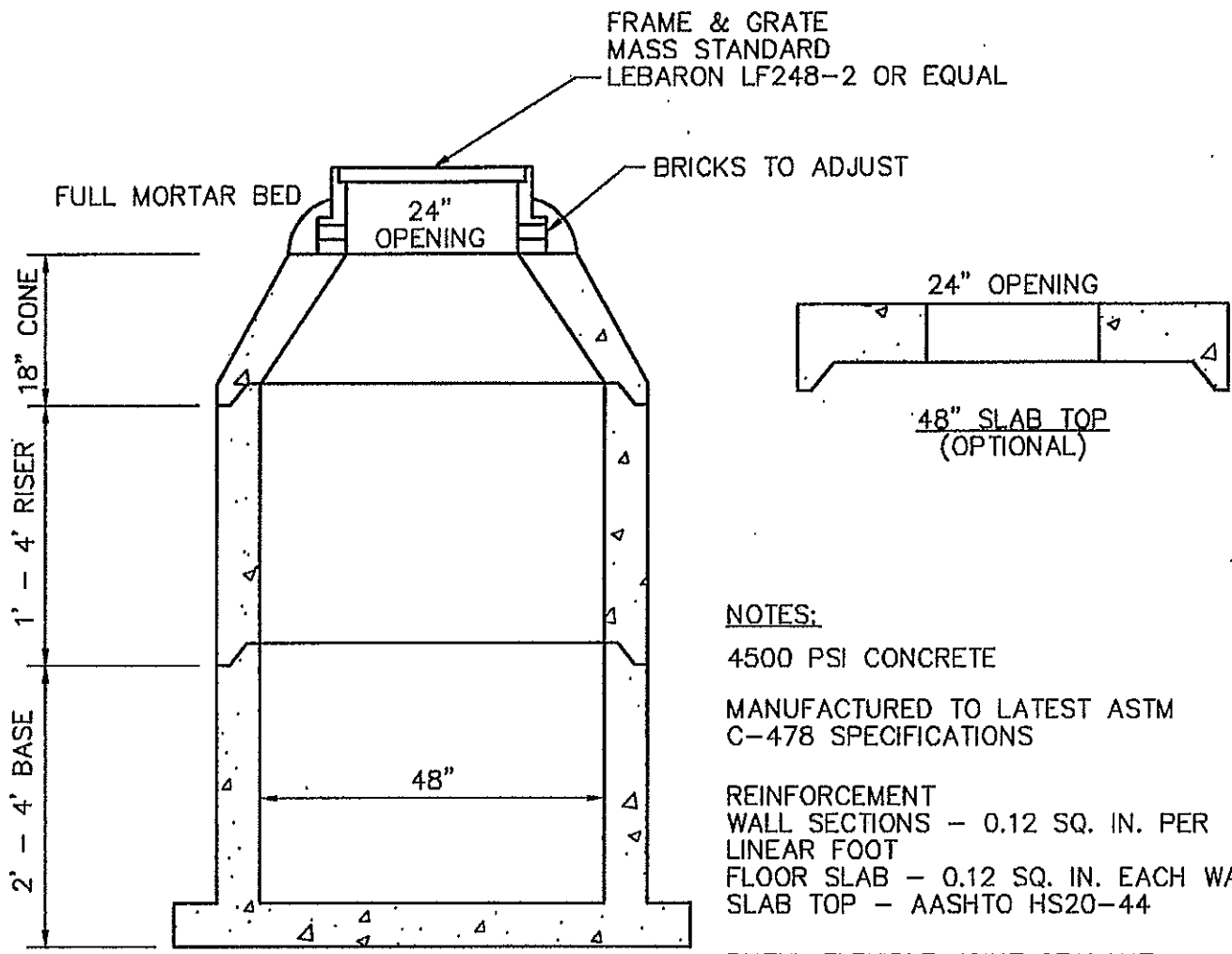
**TYPICAL  
PRECAST CONCRETE  
MANHOLE  
DETAIL**

**CITY OF CHICOPEE ENGINEERING DEPARTMENT  
115 BASKIN DRIVE  
CHICOPEE, MASSACHUSETTS 01020  
(413) 594-3416**

**DRAWN BY: CJC  
CHECKED BY: FWV  
APPROVED BY: SJF**

**DATE: Feb., 2000  
SCALE: N.T.S.**

**DRAWING NUMBER**



**NOTES:**

- 4500 PSI CONCRETE
- MANUFACTURED TO LATEST ASTM C-478 SPECIFICATIONS
- REINFORCEMENT
- WALL SECTIONS - 0.12 SQ. IN. PER LINEAR FOOT
- FLOOR SLAB - 0.12 SQ. IN. EACH WAY
- SLAB TOP - AASHTO HS20-44
- BUTYL FLEXIBLE JOINT SEALANT CONFORMS TO LATEST ASTM C-990 SPECIFICATIONS
- MANHOLE STEPS - STEEL REINFORCED COPOLYMER POLYPROPYLENE PLASTIC

<p><b>TYPICAL PRECAST CONCRETE CATCH BASIN DETAIL</b></p>	<p><b>CITY OF CHICOPEE ENGINEERING DEPARTMENT</b>  <b>115 BASKIN DRIVE</b>  <b>CHICOPEE, MASSACHUSETTS 01020</b>  <b>(413) 594-3416</b></p>		
	<p><b>DRAWN BY: CJC</b>  <b>CHECKED BY: FWV</b>  <b>APPROVED BY: SJF</b></p>	<p><b>DATE: Feb., 2000</b>  <b>SCALE: N.T.S.</b></p>	<p><b>DRAWING NUMBER</b></p>

SECTION  
VIEW  
N.T.S.

TYPICAL  
MANHOLE

VARIOUS DIAMETER  
PIPE

VARIOUS DIAMETER  
PIPE

FLOW

BRICK CHIPS  
& MORTAR

INVERTED ARCH  
WITH BRICKS LAID  
ON EDGE

PLAN  
VIEW  
N.T.S.

FLOW

BRICK &  
MORTAR  
SHELF

FLOW

FLOW

**MANHOLE INVERT  
CONSTRUCTION  
DETAIL**

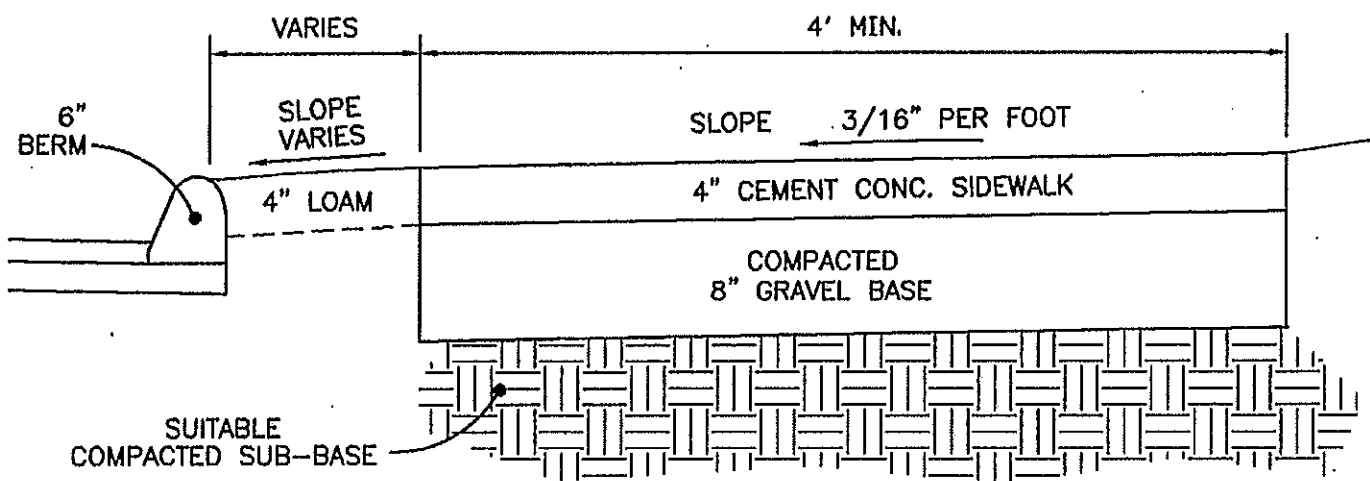
CITY OF CHICOPEE ENGINEERING DEPARTMENT  
115 BASKIN DRIVE  
CHICOPEE, MASSACHUSETTS 01020  
(413) 594-3416

DRAWN BY: CJC  
CHECKED BY: FWV  
APPROVED BY: SWK

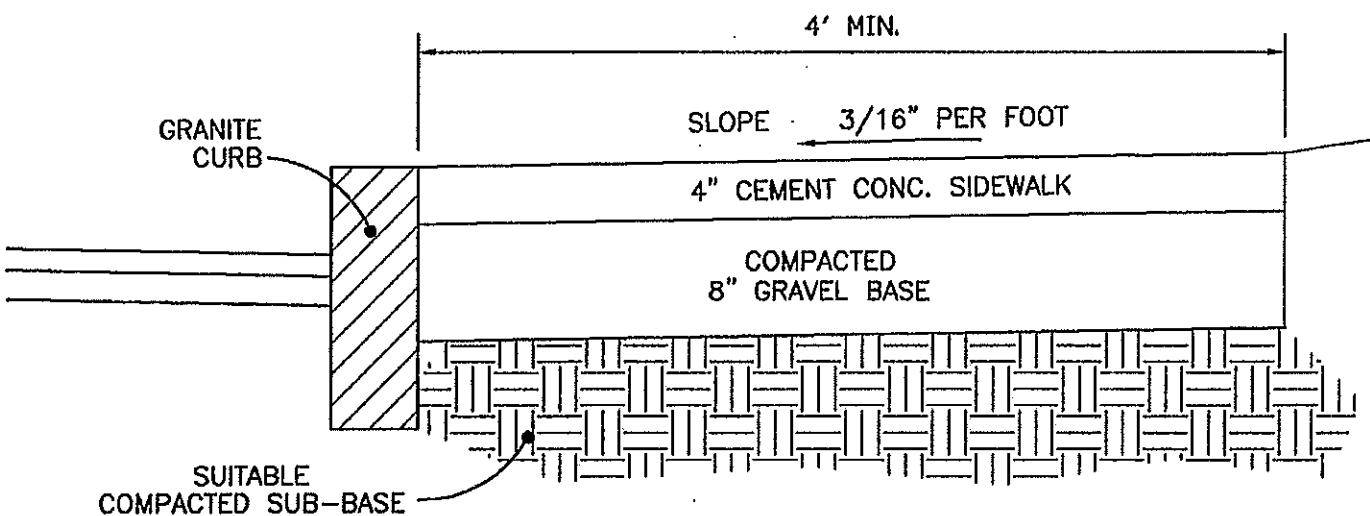
DATE: 01/19/00  
SCALE: N.T.S.

DRAWING NUMBER





STANDARD SIDEWALK



SIDEWALK AT CURB LINE

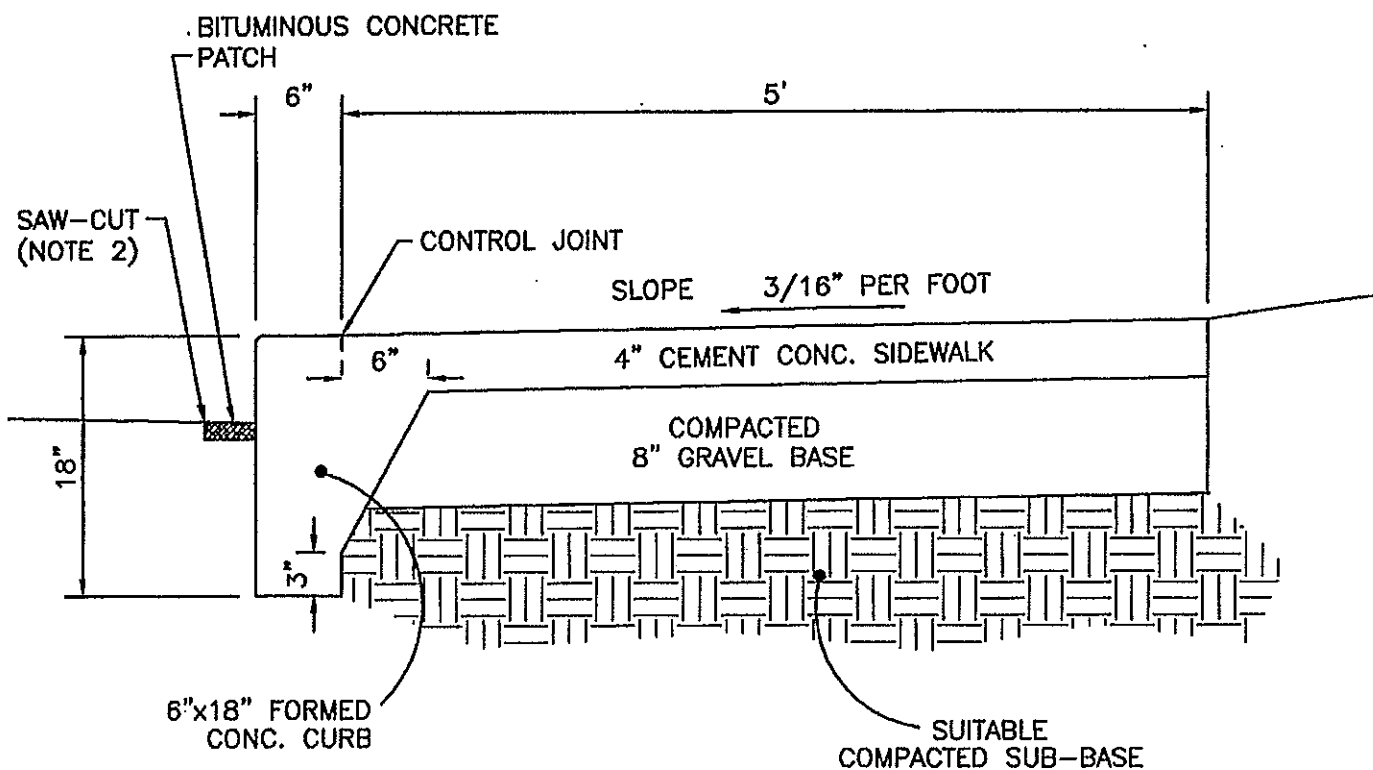
**CEMENT  
CONCRETE  
SIDEWALK**

**CITY OF CHICOPEE ENGINEERING DEPARTMENT  
115 BASKIN DRIVE  
CHICOPEE, MASSACHUSETTS 01020  
(413) 594-3416**

**DRAWN BY: CJC  
CHECKED BY: FWV  
APPROVED BY: SJF**

**DATE: 07/07/00  
SCALE: N.T.S.**

**DRAWING NUMBER**



**NOTES:**

1. INSTALLATION OF CONC. CURBING TO BE PAID BY LINEAR FOOT COMPLETE-IN-PLACE.
2. SAW-CUT AS DIRECTED BY ENGINEER AND PAID UNDER SEPARATE ITEM.
3. CURB FACE FORMED MIN. 7 1/2" DEEP.
4. FORMS SHALL BE PROPERLY BRACED TO PRODUCE CONSISTENT ALIGNMENT WITH ROAD EDGE.

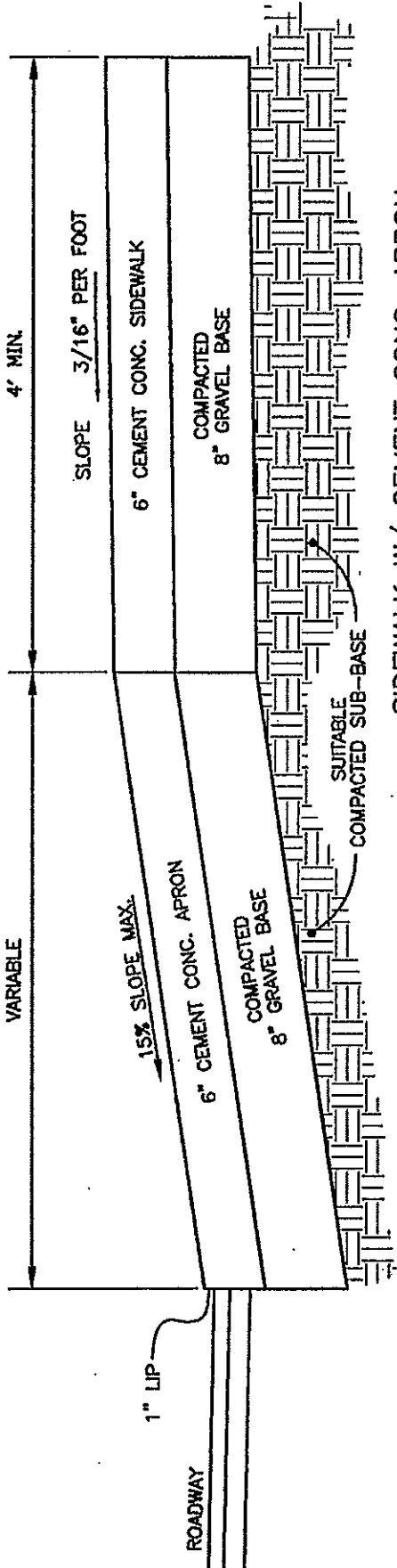
**CEMENT  
CONCRETE  
SIDEWALK W/  
FORMED CONCRETE  
CURBING**

**CITY OF CHICOPEE ENGINEERING DEPARTMENT  
115 BASKIN DRIVE  
CHICOPEE, MASSACHUSETTS 01020  
(413) 594-3416**

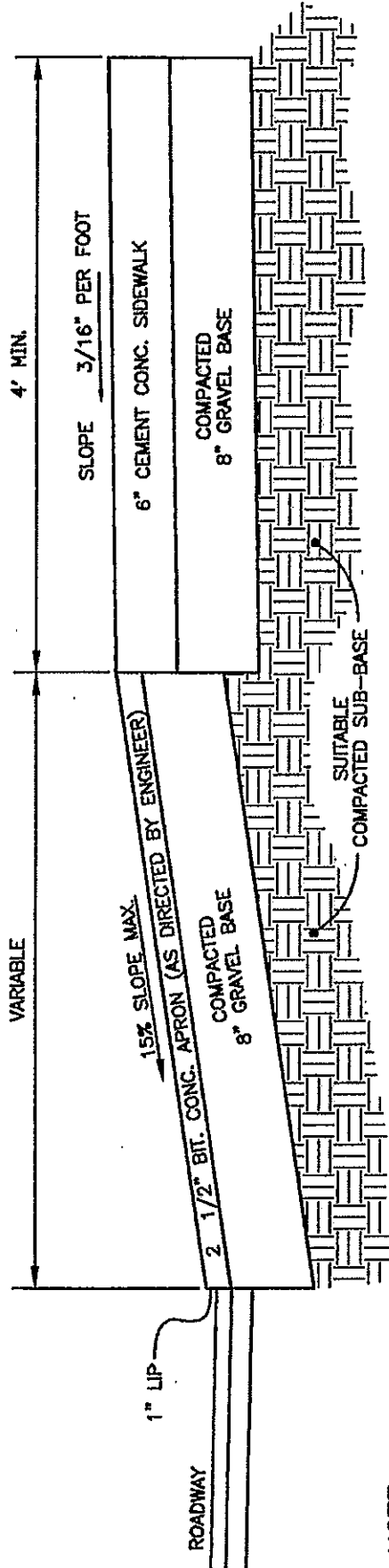
**DRAWN BY: CJC  
CHECKED BY: FWV  
APPROVED BY: SJF**

**DATE: 06/18/99  
SCALE: N.T.S.**

**DRAWING NUMBER**



SIDEWALK W/ CEMENT CONC. APRON



SIDEWALK W/ BIT. CONC. APRON

**NOTE:**

BITUMINOUS CONCRETE TO BE APPLIED WITH TWO COURSES.

CITY OF CHICOPEE ENGINEERING DEPARTMENT

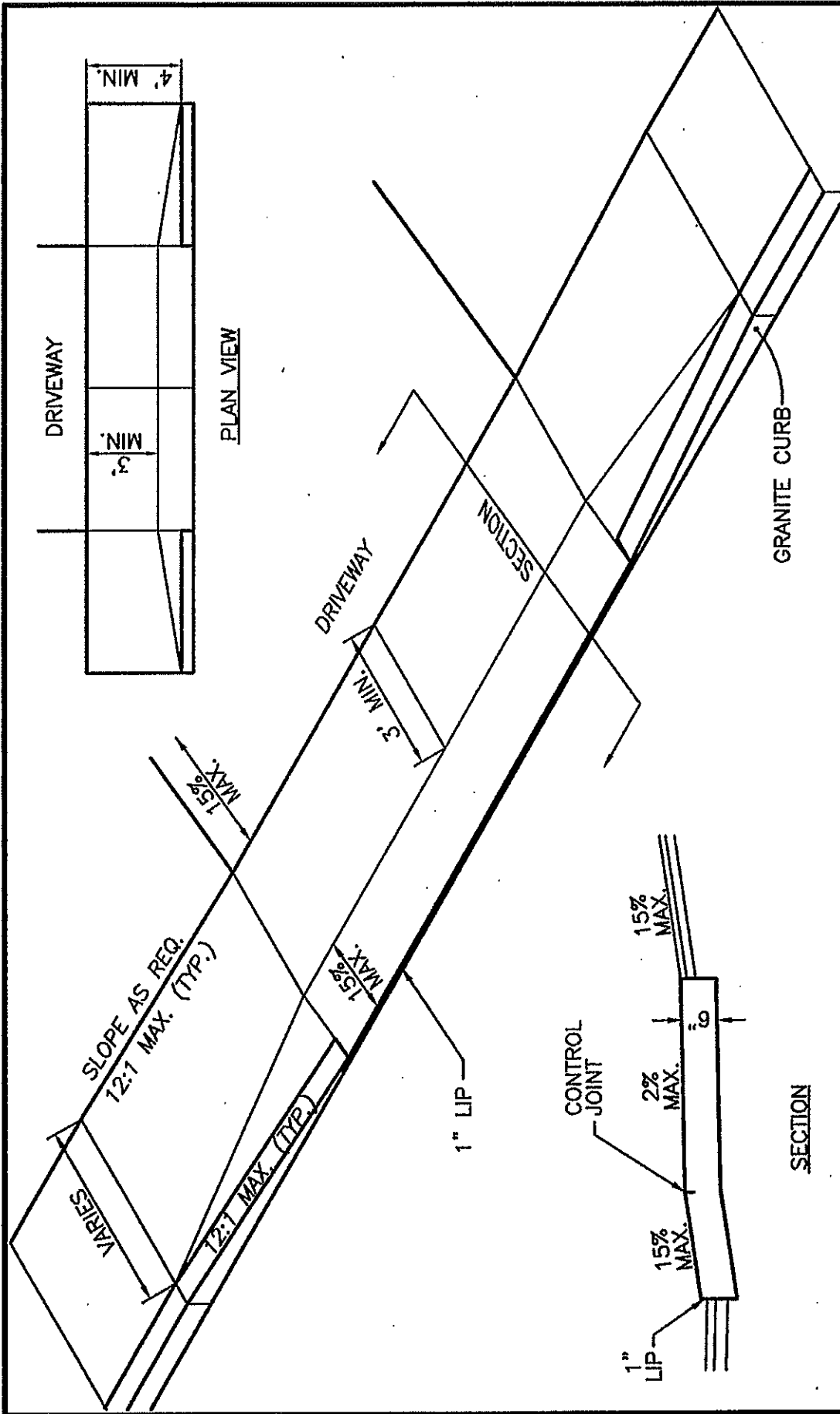
115 BASKIN DRIVE

CHICOPEE, MASSACHUSETTS 01020

(413) 594-3416

SIDEWALK AT DRIVEWAY

DRAWN BY: CJC CHECKED BY: FWV APPROVED BY: SJF	DATE: 07/07/00 SCALE: N.T.S.	DRAWING NUMBER
--	---------------------------------	----------------

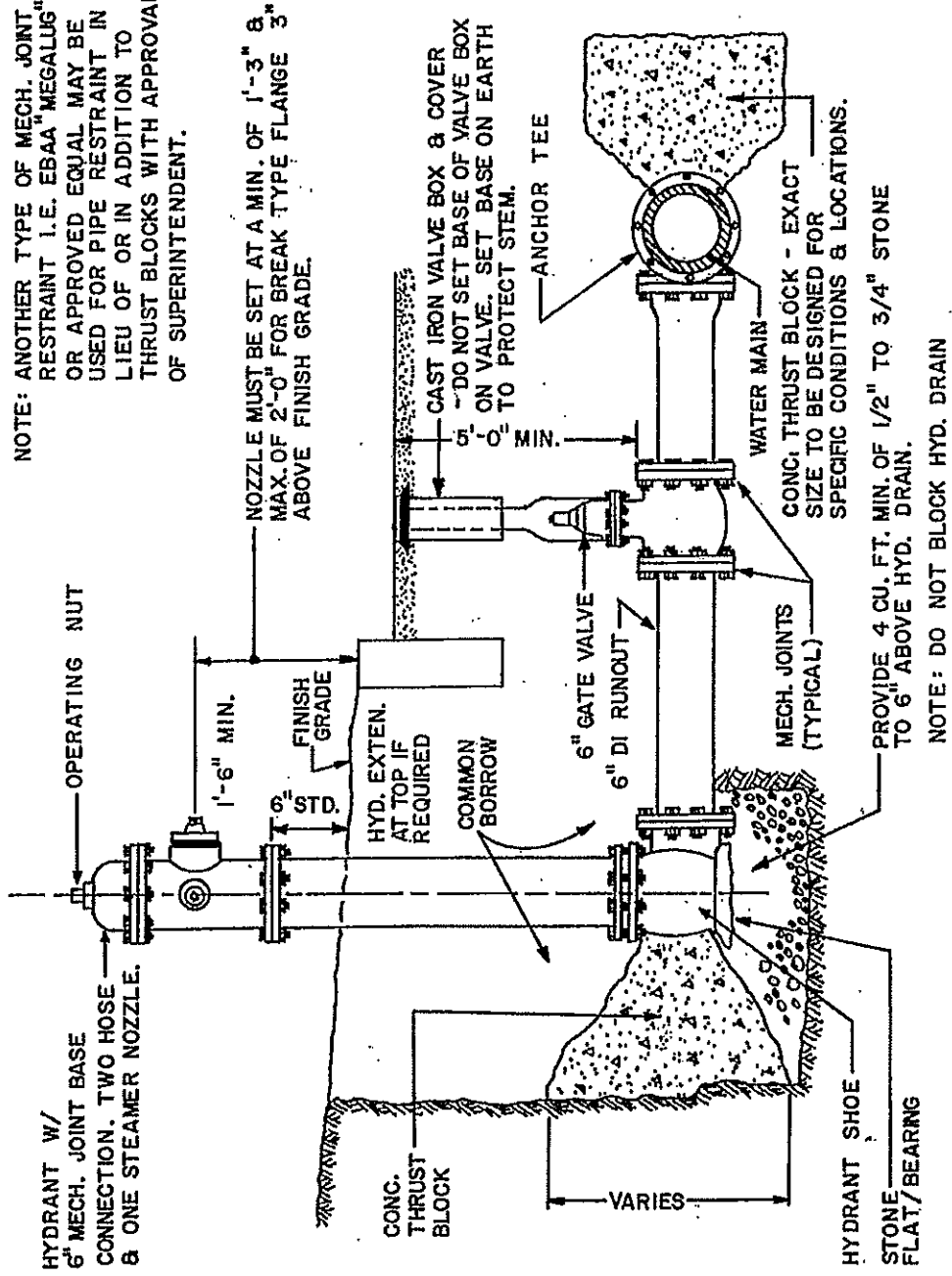


CITY OF CHICOPEE ENGINEERING DEPARTMENT 115 BASKIN DRIVE CHICOPEE, MASSACHUSETTS 01020 (413) 594-3416		DRAWING NUMBER
DRAWN BY: CJC CHECKED BY: APPROVED BY:	DATE: 07/16/04	SCALE: N.T.S.

**SIDEWALK @ DRIVEWAY  
 ACCEPTABLE SLOPES &  
 DIMENSIONS**

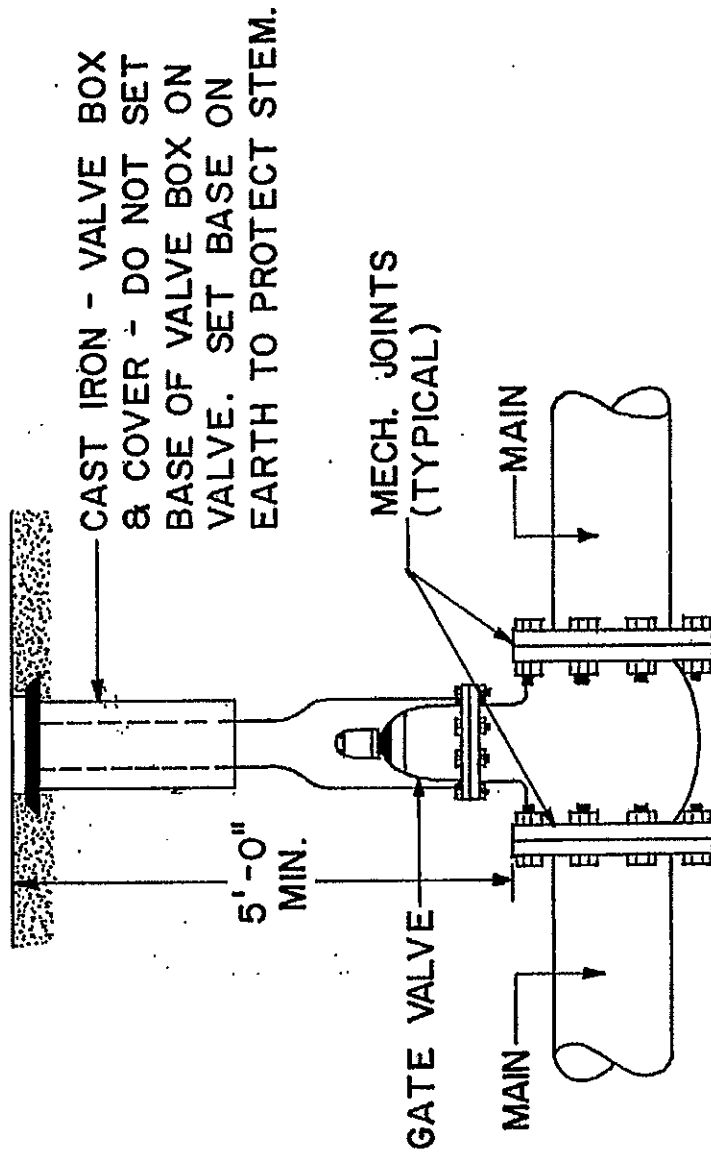
# CHICOPEE WATER DEPARTMENT

NOTE: ANOTHER TYPE OF MECH. JOINT RESTRAINT I.E. EBAA "MEGALUG" OR APPROVED EQUAL MAY BE USED FOR PIPE RESTRAINT IN LIEU OF OR IN ADDITION TO THRUST BLOCKS WITH APPROVAL OF SUPERINTENDENT.



**TYPICAL FIRE HYDRANT CONNECTION**  
SCALE: NTS

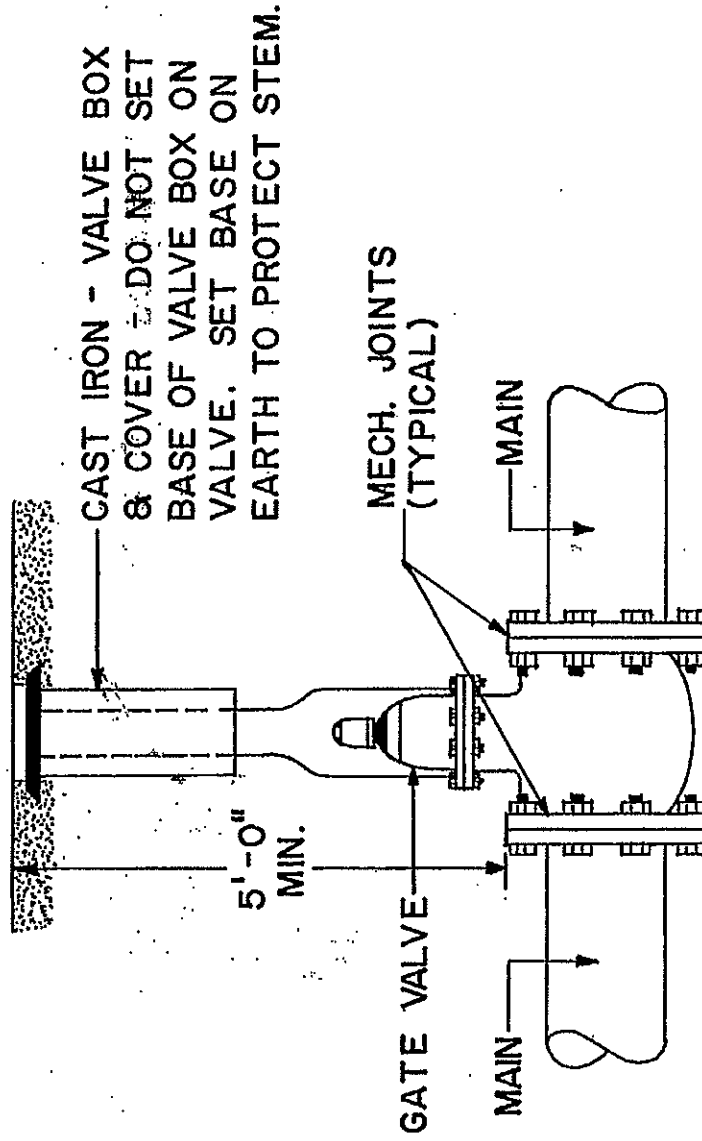
NOTE: ANOTHER TYPE OF MECH. JOINT RESTRAINT I.E. EBAA "MEGALUG" OR APPROVED EQUAL MAY BE USED FOR PIPE RESTRAINT IN LIEU OF OR IN ADDITION TO THRUST BLOCKS WITH APPROVAL OF SUPERINTENDENT.



TYPICAL GATE VALVE  
SCALE: NTS

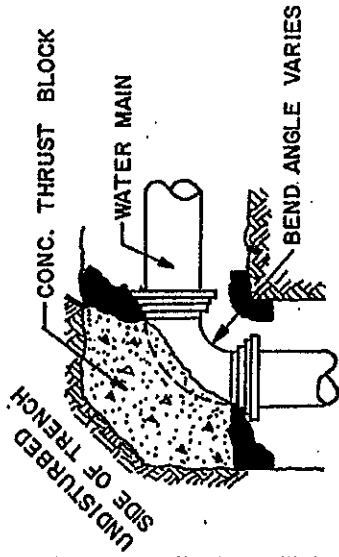
# CHICOPEE WATER DEPARTMENT

NOTE: ANOTHER TYPE OF MECH. JOINT RESTRAINT I.E. EBAA "MEGALUG" OR APPROVED EQUAL MAY BE USED FOR PIPE RESTRAINT IN LIEU OF OR IN ADDITION TO THRUST BLOCKS WITH APPROVAL OF SUPERINTENDENT.

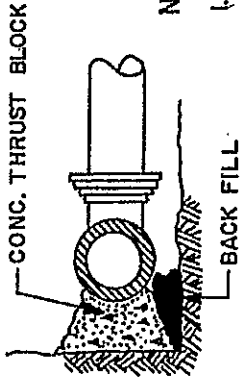


TYPICAL GATE VALVE  
SCALE: NTS

# CHICOPEE WATER DEPARTMENT



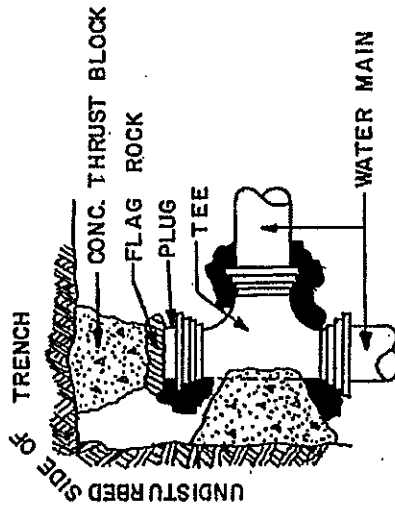
PLAN



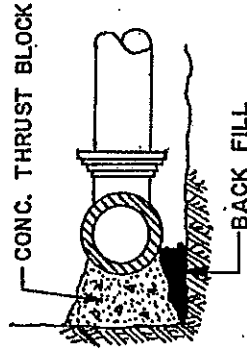
ELEVATION

**NOTES:**

1. ALL WATER MAIN FITTINGS, BENDS, TEES, PLUGS ECT. SHALL BE RESTRAINED W/ THRUST BLOCKS EXCEPT WHERE NOTED.
2. ALL THRUST BLOCKS & COLLARS SHALL BE INSTALLED SO THAT THEY BEAR AGAINST UNDISTURBED EARTH.
3. SIZE OF CONCRETE THRUST BLOCKS TO BE DETERMINED IN THE FIELD.
4. MINIMUM COMPRESSIVE STRENGTH OF THRUST BLOCK CONCRETE SHALL BE 3000 P.S.I.
5. ANOTHER TYPE OF MECH JOINT RESTRAINT I.E. EBAA "MEGALUS" OR APPROVED EQUAL MAY BE USED FOR PIPE RESTRAINT IN LIEU OF OR IN ADDITION TO THRUST BLOCKS WITH APPROVAL OF SUPERINTENDENT.



PLAN

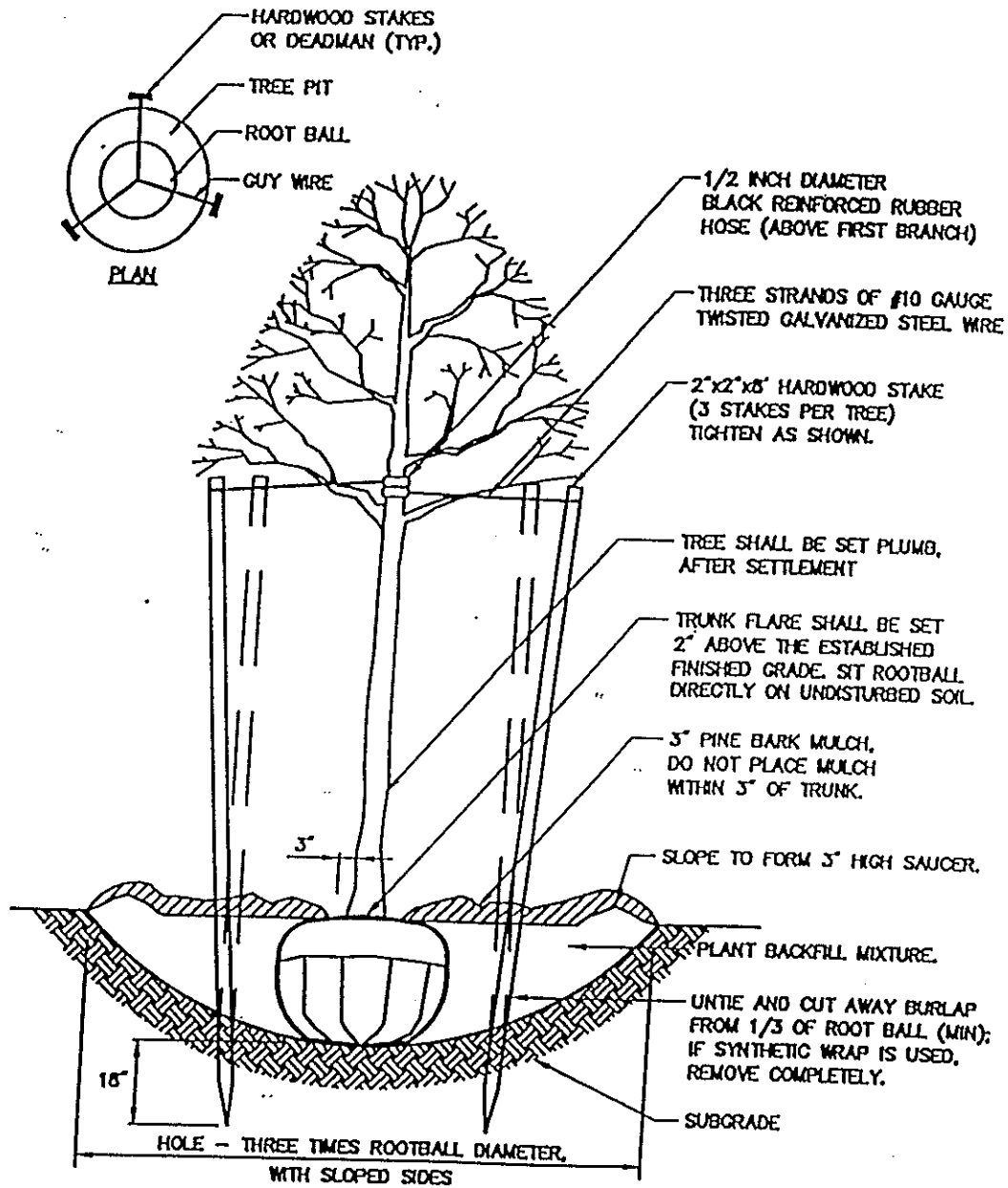


ELEVATION

## THRUST BLOCK DETAILS

SCALE: NTS





## Tree Planting (For Trees Under 4" Caliper)

N.T.S.

NOTE: FOR TREE PLANTINGS ON SLOPES, INSTALL TWO(2) OF THE THREE STAKES AND GUY WIRES ON THE UPHILL SIDE OF THE TREE. SET PLANT SPECIMEN PLUMB.

ANCHOR FIRMLY STAKE (6'HT.) 18" AWAY FROM TREE TRUNK ON SIDE OF PREVAILING WIND. USE FLEXIBLE TIES FOR FASTENING TO STAKE.

4" BARK MULCH DOME/SAUCER, 5'-DIA. IN LAWN AREAS (KEEP MULCH 2" CLEAR OF TRUNK.) CONTRACTOR SHALL CONSTRUCT ALL SAUCERS @ 4.5' DIAMETER.

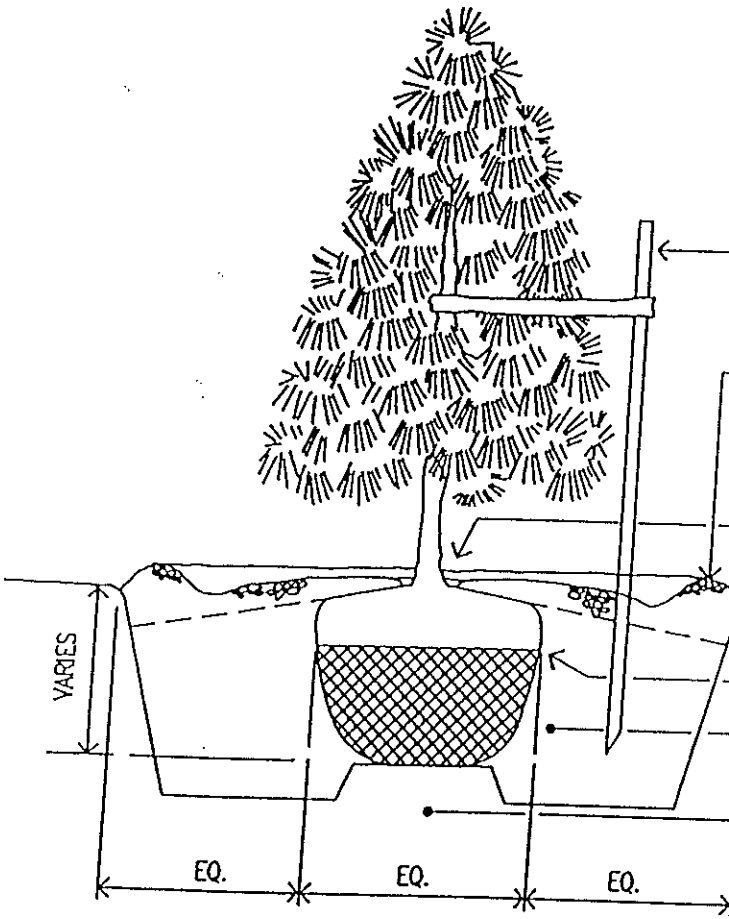
TRUNK FLARE PARTIALLY VISIBLE ABOVE FINISH GRADE

FINISH GRADE

ROLL BACK TOP 1/3 BURLAP

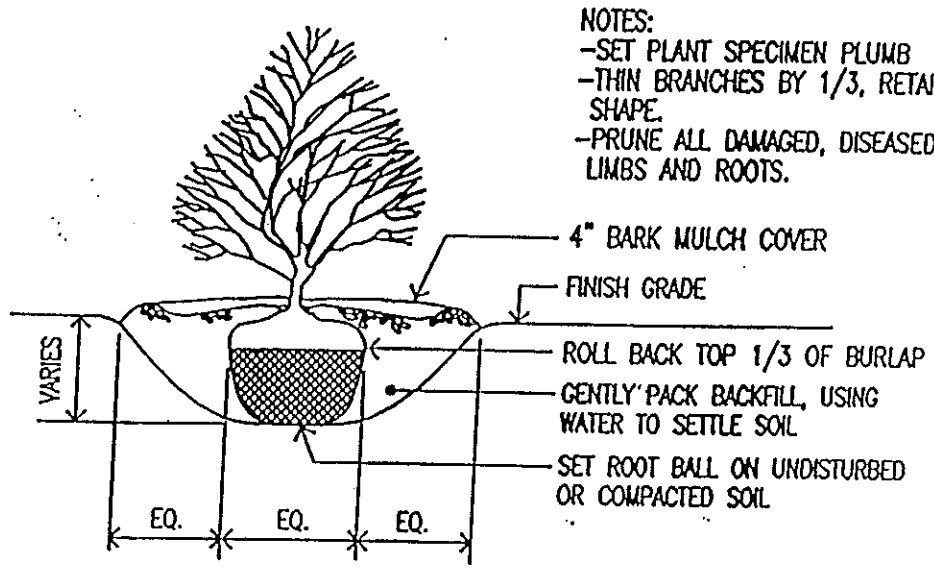
GENTLY COMPACT BACKFILL, USING WATER TO SETTLE SOIL

SET ROOT BALL ON UNDISTURBED OR COMPACTED SOIL PEDESTAL



# TREE PLANTING—EVERGREEN

NO SCALE

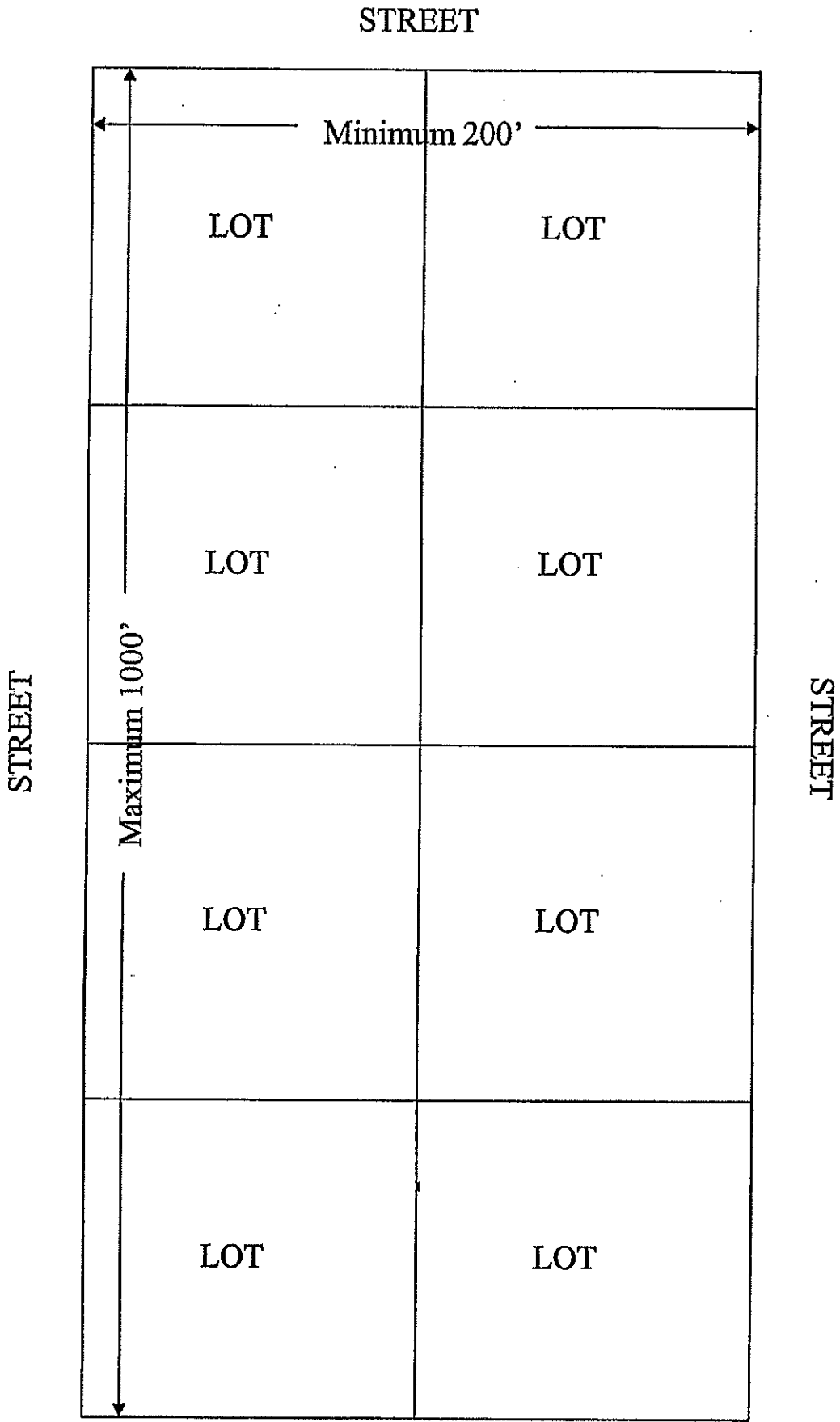


- NOTES:
- SET PLANT SPECIMEN PLUMB
  - THIN BRANCHES BY 1/3, RETAIN NATURAL SHAPE.
  - PRUNE ALL DAMAGED, DISEASED OR WEAR LIMBS AND ROOTS.

- 4" BARK MULCH COVER
- FINISH GRADE
- ROLL BACK TOP 1/3 OF BURLAP
- GENTLY PACK BACKFILL, USING WATER TO SETTLE SOIL
- SET ROOT BALL ON UNDISTURBED OR COMPACTED SOIL

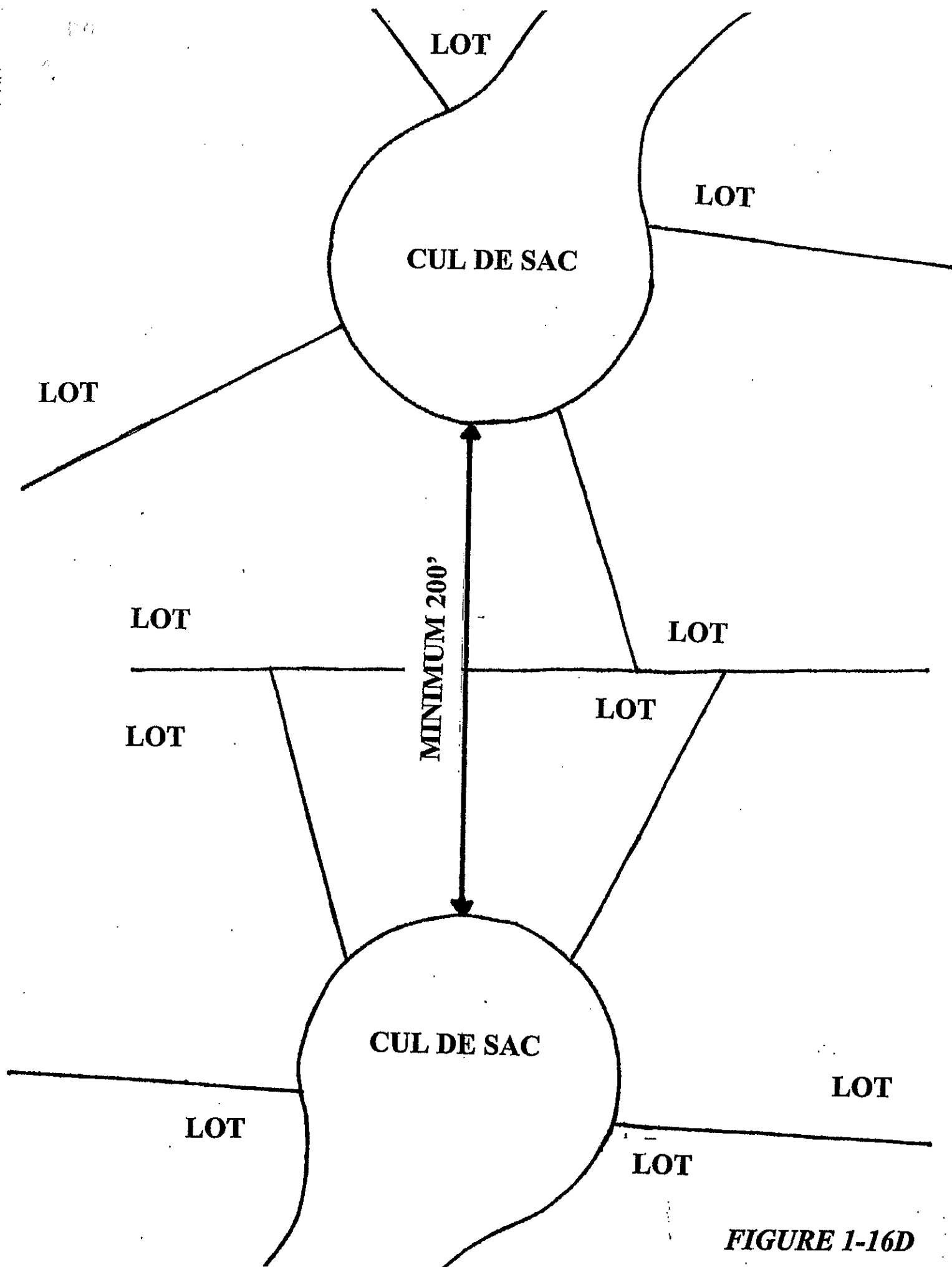
## SHRUB PLANTING

NO SCALE



STREET

FIGURE 1-14



**FIGURE 1-16D**